

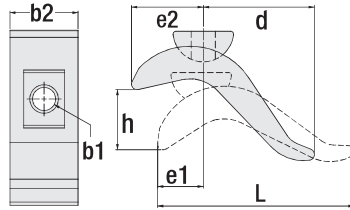
Stepless Height Adjustable Clamp

Code: 1200

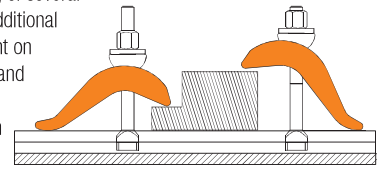
Material: Forged and hardened steel / zinc coated



Please check our section-2 catalogue for all other Clamping Tools.



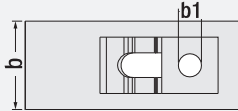
Stepless clamp for fast adjusting of several ranges of work height without additional supports. Low space requirement on machine table, Heavy duty type and especially suitable for clamping dies / moulds to press / injection machine.



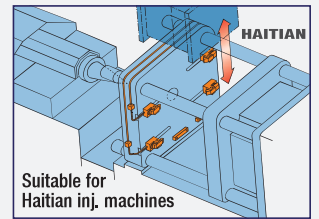
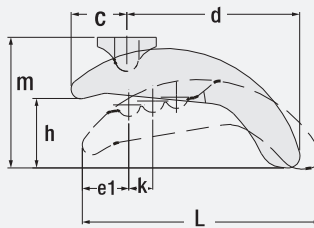
Order Code	a	DIN 787	b1 mm	b2 x L	d mm	e1 mm	e2 mm	h	Weight (g)
1200-50.140	-	-	17	50 x 140	60	30	55	75	900
1200-60.175	-	-	21	60 x 175	80	40	70	85	1600
1200-12.125	12	M12 x 12 x 125	17	50 x 140	60	30	55	0 - 50	1070
1200-14.125	14	M12 x 14 x 125						0 - 55	1080
1200-16.160	16	M16 x 16 x 160						0 - 75	1270
1200-18.160	18	M16 x 18 x 160						0 - 75	1280
1200-20.200	20	M20 x 20 x 200	21	60 x 175	80	40	70	0 - 85	2300
1200-22.200	22	M20 x 22 x 200						0 - 85	2370

Stepped Height Adjustable Clamp

Code: 1205



Material: Forged and hardened steel / zinc coated



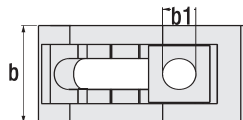
It provides using between 15-85 mm without supporting.



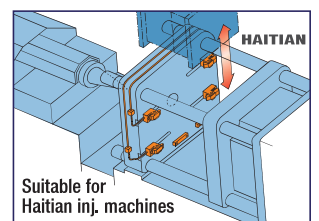
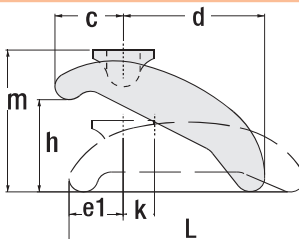
Order Code	b1 mm	a	DIN 787	m mm	h	b x L	c mm	d mm	k x3	Weight (g)
1205-017	17	16 - 18	-	93	15 - 50	65 x 165	39	128	17	2100
1205-021	21	20 - 22	-	111	20 - 65	75 x 189	43	146	19	3200
1205-025	25	24 - 28	-	126	20 - 75	85 x 213	49	164	21	4500
1205-031	31	36	-	143.5	20 - 85	95 x 238	56	182	23	6300
1205-016	17	16	M16 x 16 x 125	93	15 - 50	65 x 165	39	128	17	2500
1205-018	17	18	M16 x 18 x 125	93	15 - 50	65 x 165	39	128	17	2500
1205-020	21	20	M20 x 20 x 160	111	20 - 65	75 x 189	43	146	19	3900
1205-022	21	22	M20 x 22 x 160	111	20 - 65	75 x 189	43	146	19	3900
1205-024	25	24	M24 x 24 x 200	126	20 - 75	85 x 213	49	164	21	5700
1205-028	25	28	M24 x 28 x 200	126	20 - 75	85 x 213	49	164	21	5700
1205-036	31	36	M30 x 36 x 250	143.5	20 - 85	95 x 238	56	182	23	8800

Stepped Height Adjustable Clamp

Code: 1210



Material: Forged and hardened steel / zinc coated



It provides using between 0-75 mm without supporting.



Order Code	b1 mm	a	DIN 787	m mm	h	b x L	c mm	d mm	e1 mm	k x4	Weight (g)
1210-013	13	12 - 14	-	52	0 - 40	40 x 90	28	48	23	17	2100
1210-017	18	16 - 18	-	80	0 - 60	58 x 130	38	74	29	19	3200
1210-021	22	20 - 22	-	98	0 - 75	68 x 140	46	80	32	21	4500
1210-025	26	24 - 28	-	110	0 - 90	78 x 175	52	100	39	23	6300
1210-012	13	12	M12 x 12 x 100	52	0 - 40	40 x 90	28	48	23	17	2500
1210-014	13	14	M12 x 14 x 100	52	0 - 40	40 x 90	28	48	23	17	2500
1210-016	18	16	M16 x 16 x 160	80	0 - 60	58 x 130	38	74	29	19	3900
1210-018	18	18	M16 x 18 x 160	80	0 - 60	58 x 130	38	74	29	19	3900
1210-020	22	20	M20 x 20 x 200	98	0 - 75	68 x 140	46	80	32	23	8800