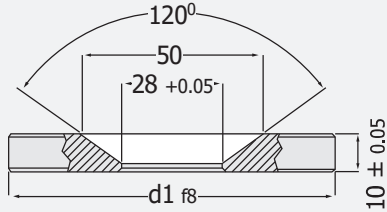


### Locating Ring

Code: **DYF**

Material: CK 45 (Ground)



Order	d1	Order	d1
DYF.60	60	DYF.125	125
DYF.70	70	DYF.150	150
DYF.80	80	DYF.175	175
DYF.90	90	DYF.200	200
DYF.100	100		

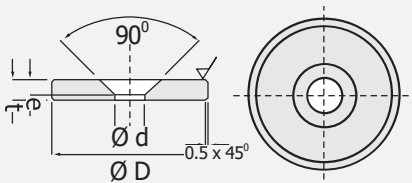
Note: Fitting holes are opened as per request.



### Locating Ring

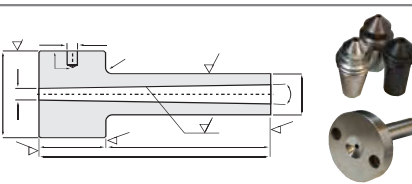
Code: **KYF**

Material: CK 45 (Ground)

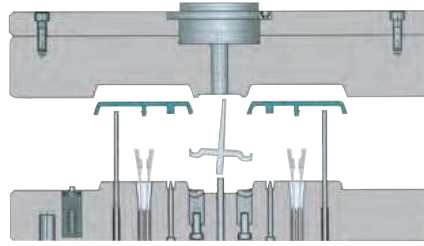


Order	Ø D	Ø d	t	e
KYF.60	60	28	15	8
KYF.80	80	28	15	8
KYF.100	100	28	20	10
KYF.125	125	28	20	10
KYF.150	150	28	20	10
KYF.175	175	28	20	10
KYF.200	200	28	20	10

Note: Fitting holes are opened as per request.



As per request / Custom-made orders.

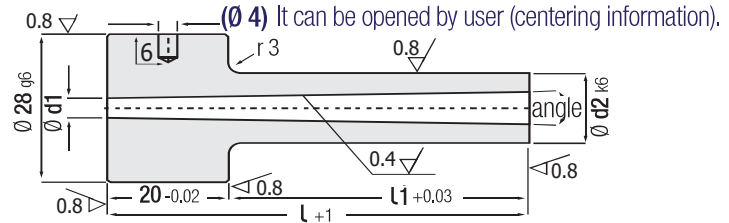


### Sprue Bush - DIN 16752

Code: **EYM**

Material: 1.2826

Two Different Angle Options: Standard Angle; d1 3.3 : angle 1.5° / Wide Angle; d1 4.3 : angle 2°



Code: **EYM**

d2	l	d1	l1	d2	l	d1	l1
12	50		30	16	50		30
	65		45		65		45
	75		55		75		55
	85	3.3	65		85		65
	95		75		95	3.3	75
	105		85		105		85
	115	4.3	95		115	4.3	95
	125		105		125		105
	135		115		135		115
	150		130		150		130
14	50		30	18	50		30
	65		45		65		45
	75		55		75		55
	85		65		85		65
	95	3.3	75		95	3.3	75
	105		85		105		85
	115	4.3	95		115	4.3	95
	125		105		125		105
	135		115		135		115
	150		130		150		130
200		180	200		180		

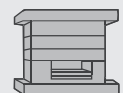


Order:  
**EYM, d2 x l x d1**



For  
Sprue Adjuster,  
pls, refer to  
page-247.

Injection  
Moulds



Page  
**285**