

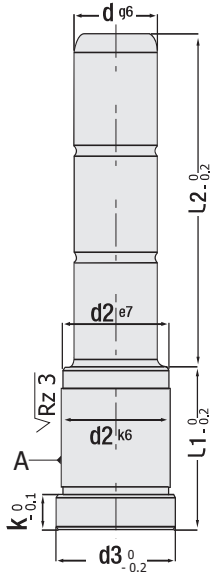


for Turkish Mould Standard



Code: **G12**

Guide Pillar - Shouldered
(with oil groove & without oil groove)



Code: **G12**
(with oil groove)



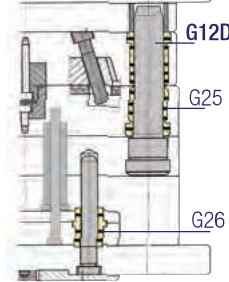
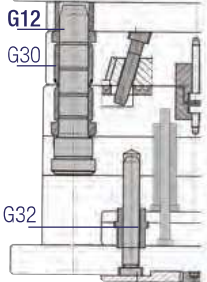
Code: **G12D**
(without oil groove)
"As per request"



IMPORTANT! Injection Mould: Our guide pillars & bushes cover standard mould systems. But, guide pillar & bushes with different tolerances should be selected for aluminum injection moulds (high temperature / pressure). It should be requested from our company (production with special materials).

G12 Mounting Example

G12D Mounting Example



Guide Pillar

Code: **G12** (with oil groove)

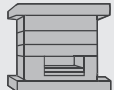
Code: **G12D** (without oil groove)

d	L1	L2	d2	d3	k
12	26	26	16	19	4
		36			
		46			
		56			
12	36	26	16	19	4
		36			
		46			
		56			
12	46	26	16	19	4
		36			
		46			
		66			
14	26	26	20	25	6
		36			
		46			
		56			
14	36	26	20	25	6
		36			
		46			
		56			
14	46	26	20	25	6
		36			
		46			
		56			
14	56	26	20	25	6
		36			
		46			
		66			
16	26	26	24	28	6
		36			
		46			
		56			
16	36	26	24	28	6
		36			
		46			
		56			
16	46	26	24	28	6
		36			
		46			
		56			
16	56	26	24	28	6
		36			
		46			
		66			
16	26	26	26	31	6
		36			
		46			
		56			
16	36	26	26	31	6
		36			
		46			
		56			
16	46	26	26	31	6
		36			
		46			
		56			
16	56	26	24	28	6
		36			
		46			
		66			
18	26	26	26	31	6
		36			
		46			
		56			
18	36	26	26	31	6
		36			
		46			
		56			
18	46	26	26	31	6
		36			
		46			
		56			
18	56	26	26	31	6
		36			
		46			
		66			
20	26	26	28	32	6
		36			
		46			
		56			
20	36	26	28	32	6
		36			
		46			
		56			
20	46	26	28	32	6
		36			
		46			
		56			
20	56	26	28	32	6
		36			
		46			
		56			

d	L1	L2	d2	d3	k
16	56	26	24	28	6
		36			
		46			
		56			
16	66	26	24	28	6
		36			
		46			
		56			
16	76	26	24	28	6
		36			
		46			
		56			
16	86	26	24	28	6
		36			
		46			
		56			
18	26	26	26	31	6
		36			
		46			
		56			
18	36	26	26	31	6
		36			
		46			
		56			
18	46	26	26	31	6
		36			
		46			
		56			
18	56	26	24	28	6
		36			
		46			
		66			
20	26	26	28	32	6
		36			
		46			
		56			
20	36	26	28	32	6
		36			
		46			
		56			
20	46	26	28	32	6
		36			
		46			
		56			
20	56	26	28	32	6
		36			
		46			
		56			

d	L1	L2	d2	d3	k
18	56	26	26	31	6
		36			
		46			
		56			
18	66	26	26	31	6
		36			
		56			
		76			
18	76	26	26	31	6
		46			
		66			
		86			
18	86	26	26	31	6
		46			
		66			
		86			
20	26	26	28	32	6
		36			
		46			
		56			
20	36	26	28	32	6
		36			
		46			
		56			
20	46	26	28	32	6
		36			
		46			
		56			
20	56	26	28	32	6
		36			
		46			
		56			

To be continued on the next page



Order : **G12. d x L1 x L2**
(G12D = without oil groove)

Material: < Ø 20 = 1.7131
> Ø 20 = 1.1213 (Cf53)
Hardness: 58 - 62 HRC

GTH guide pillars are polished with surface polishing machine at final stage of production (after grinding).