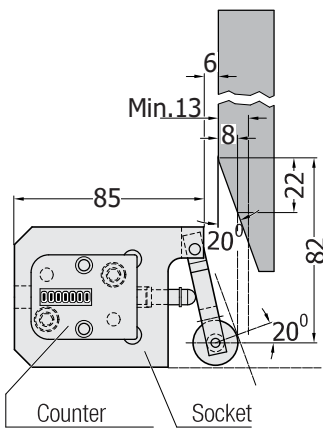
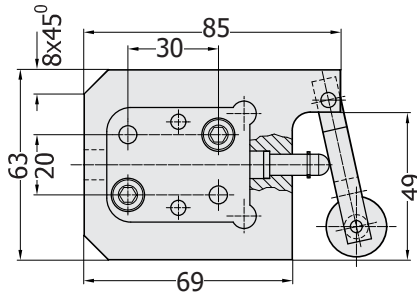
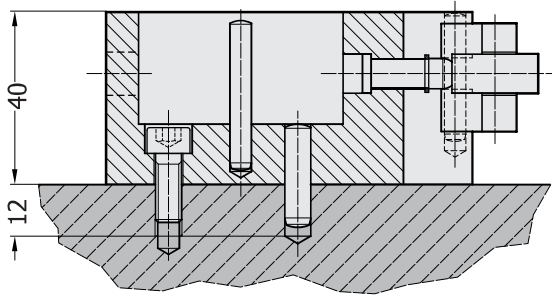




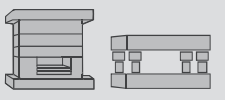
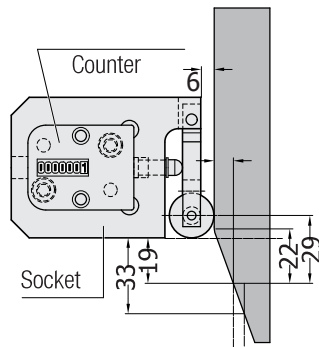
Installation Socket for Cycle Counter

Code: G124.1



Mounting:
Please fix cycle counter
in the hole of socket
and use 2 pcs.
of cylinder head cap
screws and dowel pin.

Operation Mode:
Cycle counter is
non-detachable
when mounted.



Order: G124.1

Mechanical Counters



Economic Type

- * 5 - digit
- * Overhead pulsative
- * Side zeroing



Order: 13701



Professional Type

- * 5 - digit
- * Overhead pulsative
- * Side zeroing



Order: RS207



Economic Type

- * 5 - digit
- * Overhead pulsative
- * Side zeroing



Order: D29003

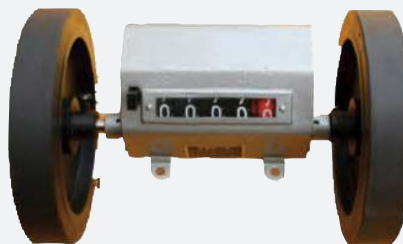


Economic Type

- * 5 - digit
- * Pulling Counter
- * Knob Type



Order: D29002



Counter

- * 5 - digit
- * With the rubber wheel for meter



Order: D29001