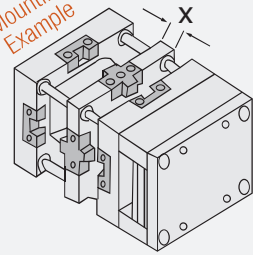
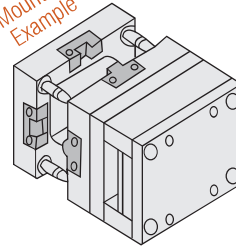


Mounting Example



Oil grooves were created on the working surfaces of the products.

Mounting Example

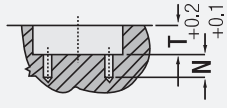
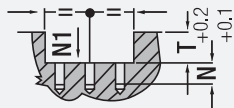


## Group Locating - Centring Unit

Code: **G127**

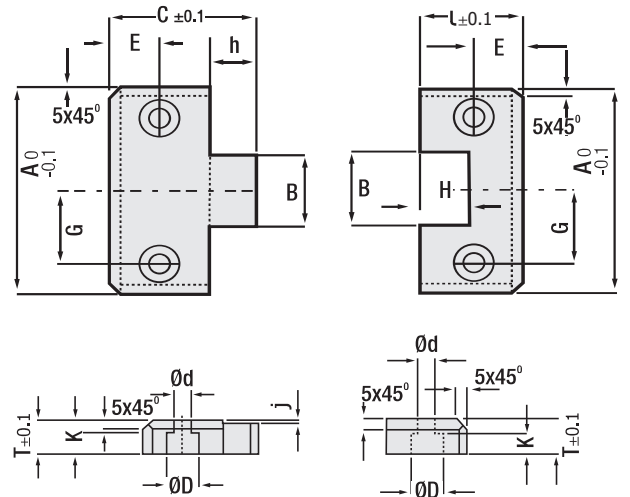
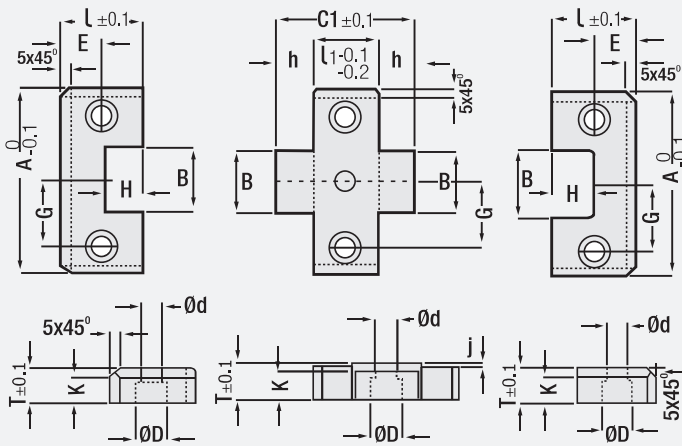
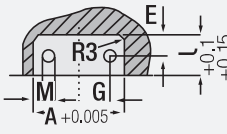
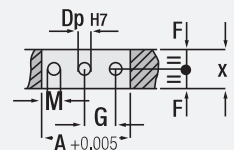
## Square Locating - Centring Unit

Code: **G128**



Mounting Mould Application

Mounting Mould Application



Code: **G127**

Code: **G128**

A	X	B	C1	D	d	E	F	G	h
50	26	17	43	10.5	6.5	11	13	17	8.5
	36		53				18		
75	26	25	54	16.5	10.5	18	13	25	14
	36		64				18		
100	36	35	76	16.5	10.5	22	18	35	20
	46		86				23		
125	36	45	76	16.5	10.5	22	18	42	20
	46		86				23		

A	G	E	M	L	T	N
38	11	7	M5	17	13	15
50	17	11	M6	21.5	16	15
75	25	18	M10	36	19	20
100	35	22	M10	45	19	20
125	42	22	M10	45	25	20

A	H	j	K	L	L1	T	M	N	Dp	N1
50	9.5	1.5	8	21.5	26	16	M6	15	6	17
					36					
75	15	1.5	12	36	26	19	M10	20	10	22
					36					
100	21	1.5	12	45	36	19	M10	20	10	22
					46					
125	21	1.5	12	45	36	25	M10	20	12	22
					46					

A	B	C	d	D	h	H	j	K
38	11	30	5.5	9.5	8	9	1.5	5.5
50	17	30	6.5	10.5	8.5	9.5	1.5	8
75	25	50	10.5	16.5	14	15	1.5	12
100	35	65	10.5	16.5	20	21	1.5	12
125	45	65	10.5	16.5	20	21	1.5	12

Fixing screws will be provided separately.



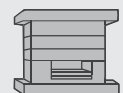
Order: **G127.A.X**

Material: 1.2343  
Hardness: 52 - 54 HRC



Order: **G128.A**

Injection Moulds



Page  
**105**