

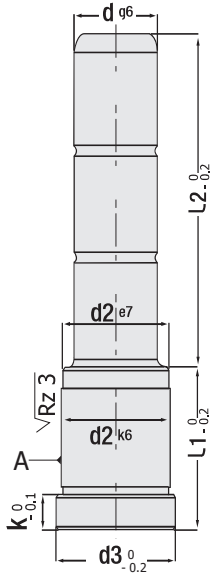


for Turkish Mould Standard



Code: G12

Guide Pillar - Shouldered
(with oil groove & without oil groove)



Code: G12
(with oil groove)



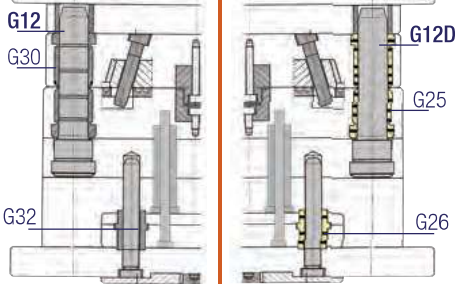
Code: G12D
(without oil groove)
"As per request"



IMPORTANT! Injection Mould: Our guide pillars & bushes cover standard mould systems. But, guide pillar & bushes with different tolerances should be selected for aluminum injection moulds (high temperature / pressure). It should be requested from our company (production with special materials).

G12 Mounting Example

G12D Mounting Example



Guide Pillar

Code: G12 (with oil groove)

Code: G12D (without oil groove)

d	L1	L2	d2	d3	k	d	L1	L2	d2	d3	k	d	L1	L2	d2	d3	k
12	26	26	16	19	4	16	56	26	24	28	6	18	56	26	26	31	6
		36						56						66			
		46						76						96			
		56						116						126			
12	36	26	16	19	4	16	56	26	24	28	6	18	56	26	26	31	6
		36						56						66			
		46						76						96			
		56						116						126			
12	46	26	16	19	4	16	56	26	24	28	6	18	56	26	26	31	6
		36						56						66			
		46						76						96			
		56						116						126			
14	26	26	20	25	6	16	66	26	24	28	6	18	76	26	26	31	6
		36						56						66			
		46						76						106			
		56						116						126			
14	36	26	20	25	6	16	66	26	24	28	6	18	76	26	26	31	6
		36						56						66			
		46						76						106			
		56						116						126			
14	46	26	20	25	6	16	66	26	24	28	6	18	76	26	26	31	6
		36						56						66			
		46						76						96			
		56						116						126			
14	56	26	20	25	6	16	66	26	24	28	6	18	76	26	26	31	6
		36						56						66			
		46						76						96			
		56						116						126			
16	26	26	24	28	6	18	26	26	26	31	6	20	36	26	28	32	6
		36						36						46			
		46						56						66			
		56						76						96			
16	36	26	24	28	6	18	36	26	26	31	6	20	46	26	28	32	6
		36						36						46			
		46						56						66			
		56						76						96			
16	46	26	24	28	6	18	46	26	26	31	6	20	56	26	28	32	6
		36						36						46			
		46						56						66			
		56						76						96			
16	56	26	24	28	6	18	56	26	26	31	6	20	56	26	28	32	6
		36						36						46			
		46						56						66			
		56						76						96			
16	66	26	24	28	6	18	66	26	26	31	6	20	66	26	28	32	6
		36						36						46			
		46						56						66			
		56						76						96			
16	76	26	24	28	6	18	76	26	26	31	6	20	76	26	28	32	6
		36						36						46			
		46						56						66			
		56						76						96			
16	86	26	24	28	6	18	86	26	26	31	6	20	86	26	28	32	6
		36						36						46			
		46						56						66			
		56						76						96			
16	96	26	24	28	6	18	96	26	26	31	6	20	96	26	28	32	6
		36						36						46			
		46						56						66			
		56						76						96			
16	106	26	24	28	6	18	106	26	26	31	6	20	106	26	28	32	6
		36						36						46			
		46						56						66			
		56						76						96			
16	116	26	24	28	6	18	116	26	26	31	6	20	116	26	28	32	6
		36						36						46			
		46						56						66			
		56						76						96			

To be continued on the next page

Order : G12. d x L1 x L2
(G12D = without oil groove)

Material: < Ø 20 = 1.7131
> Ø 20 = 1.1213 (Cf53)
Hardness: 58 - 62 HRC

GTH guide pillars are polished with surface polishing machine at final stage of production (after grinding).