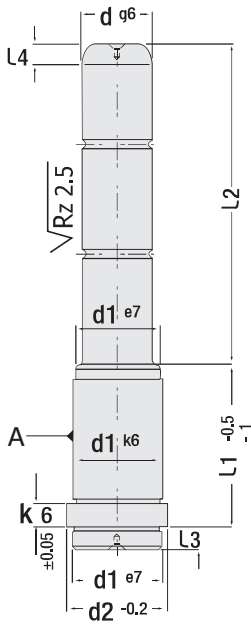




Code: G13

**Guide Pillar with Centring Collar**  
(with oil groove & without oil groove)

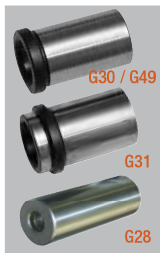


Code: G13

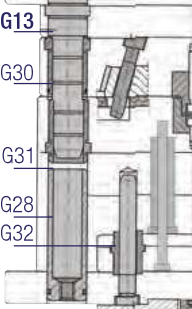


(without oil groove)  
"As per request"

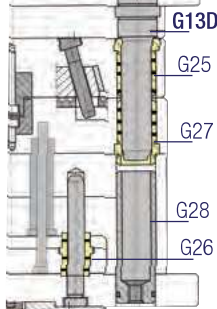
Code: G13D



G13 Mounting Example



G13D Mounting Example



**Guide Pillar with Centring Collar** (with oil groove & without oil groove) Code: G13

d	L1	L2	L3	L4	d1	d2	k
15 14	17	35	9	5	20	25	6
		55					
		75					
		95					
15 14	22	30	9	5	20	25	6
		50					
		70					
		90					
		110					
15 14	27	125	9	5	20	25	6
		145					
		165					
		30					
		45					
15 14	36	75	9	5	20	25	6
		95					
		115					
		125					
		145					
15 14	46	85	9	5	20	25	6
		105					
		125					
		145					
		155					
15 14	56	35	9	5	20	25	6
		55					
		75					
		95					
		135					

d	L1	L2	L3	L4	d1	d2	k
15 14	66	55	9	5	20	25	6
		65					
		85					
		95					
15 14	76	105	9	5	20	25	6
		125					
		35					
		55					
		75					
15 14	86	75	9	5	20	25	6
		95					
		55					
		75					
15 14	96	95	9	5	20	25	6
		55					
		75					
15 14	116	75	9	5	20	25	6
18 20	17	35	9	5	26	31	6
		55					
		75					
		120					
18 20	22	45	9	5	26	31	6
		65					
		85					
		95					
18 20	27	115	9	5	26	31	6
		135					
		35					
		45					
		65					
15 14	56	85	9	5	20	25	6
		105					
		125					
		145					
		165					
15 14	56	165	9	5	20	25	6
		225					
		245					
		35					
		45					

To be continued on the next page

Order: G13, d x L1 x L2  
(with oil groove)

Order: G13D, d x L1 x L2  
(without oil groove)

Material: 1.1213 (Cf53)  
Hardness: 58 - 62 HRC

Note: To avoid wrong closing of mould holder plates, 2 different products are used.

Main dimensions: 14 - 20 - 24 - 30 - 40 other auxiliary dimensions: 15 - 18 - 22 - 32 - 42.

To avoid wrong closing of mould holder plates, can be used at 3 main dimensions guide pillar and 1 auxiliary dimension guide pillars. GTH mould pillars were polished with surface polishing machine at final stage of production. The products with oil groove are available in our stocks.