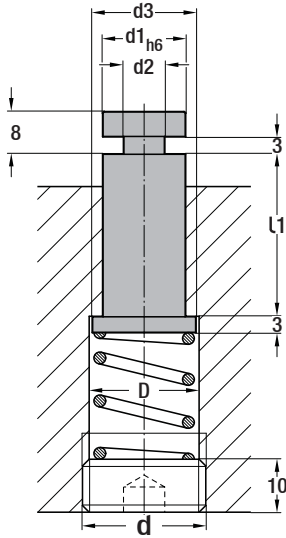




Sheet Lifting Pin

Code: **G23**



(for sheet lifting) Code: **G23**

| d1 h6 | L1 mm | Ø d2 | Ø d3 | D d |
|----------|----------|---------|---------|----------------------|
| 8 | 20 | 5 | 10 | 10.5 M.12 x1.5 |
| | 25 | | | |
| | 32 | | | |
| | 40 | | | |
| 10 | 25 | 6 | 12 | 12.5 M.14 x1.5 |
| | 32 | | | |
| | 40 | | | |
| | 50 | | | |
| 13 | 25 | 7 | 16 | 16.5 M.18 x1.5 |
| | 32 | | | |
| | 40 | | | |
| | 50 | | | |
| 16 | 32 | 8 | 20 | 21 M.22 x1.5 |
| | 40 | | | |
| | 50 | | | |

Order: **G23. d1 x L1**

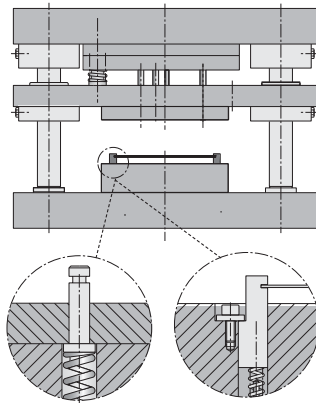
Material: 1.7131 (16MnCr5)
Hardness: 58-60 HRC

Page
46



Dies

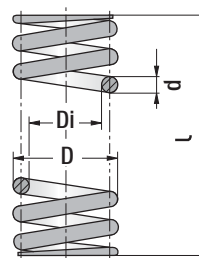
Mounting Example



It is used to align and lifting sheet in progressive / multi-stage forming dies. G145 - Compression spring set screw and round steel spring can be used for mounting.

Round Steel Spring

Code: **G23S**



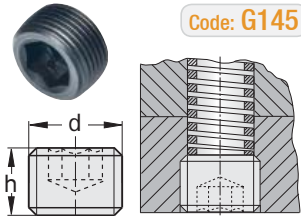
(sheet lifting spring)

| D | Di | d | L |
|------|------|-----|----|
| 10.5 | 8.5 | 1.5 | 40 |
| 12.5 | 10.5 | 1.5 | 55 |
| 16.5 | 13 | 2 | 40 |
| 21 | 17 | 2.5 | 40 |

L: Spring length / die plate selection as per dimension.

Compression Spring Set Screw

Code: **G145**



| d Thread | dh Hole | h Length | SW Allen |
|-------------------|------------|-------------|-------------|
| M.12 x 1.5 | 10.5 | 10 | 6 |
| M.14 x 1.5 | 12.5 | 10 | 6 |
| M.18 x 1.5 | 16.5 | 10 | 8 |
| M.22 x 1.5 | 20.5 | 10 | 8 |

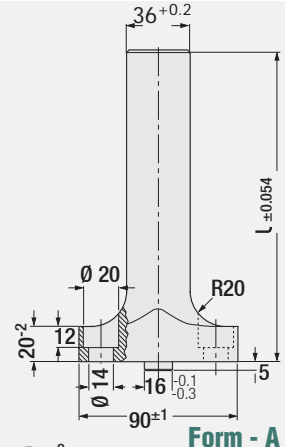


Air Pin

Code: **G69B**

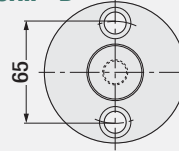
Reference: VW / AUDI 39D 638

L: It is determined according to order.

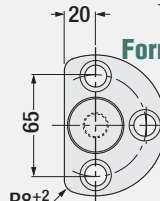


Form - A

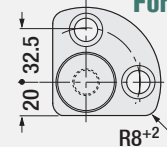
Form - B



Form - C



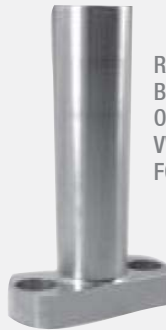
Form - D



| Order | Form | L |
|-------------------|----------|----------------|
| G69 Form A | A | as per request |
| G69 Form B | B | |
| G69 Form C | C | |
| G69 Form D | D | |

The screws used during mounting of units are supplied by users.

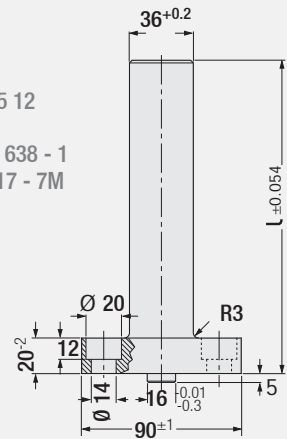
Material: 1.0503 (CK45)



Air Pin

Code: **G69**

Reference:
BMW B2 2615 12
OPEL F33 15
VW AUDI 39D 638 - 1
FORD WDX 17 - 7M



| Order | L |
|---------|--------|
| G69.110 | 110 mm |
| G69.150 | 150 mm |
| G69.160 | 160 mm |
| G69.175 | 175 mm |
| G69.200 | 200 mm |
| G69.225 | 225 mm |
| G69.250 | 250 mm |
| G69.275 | 275 mm |
| G69.300 | 300 mm |
| G69.325 | 325 mm |
| G69.400 | 400 mm |

The screws used during mounting of units are supplied by users.

Material: 1.0503 (CK45)