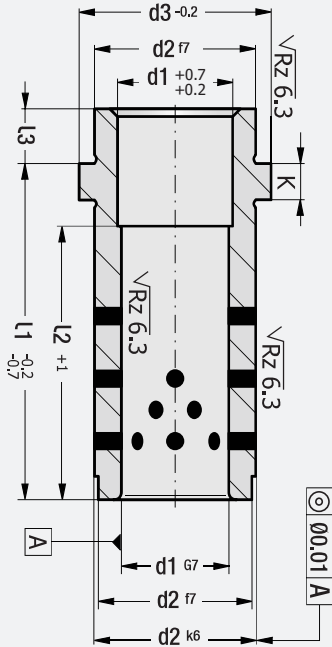




Guide Bush with Collar, Self-Lubricating

Code: G27



G27 products used in injection moulds with G13D guide pillars (without oil groove). Higher stability is achieved with centering of the mould in length. This way, a long-term and precision working environment with other equipment (ejector - core etc.). H7 tolerance is recommended in guide pillar / bush systems. It is compatible with the sudden movements during working. These products are not affected by vibration / impacts.

Heat resistance: 150° c. It can even work in humid environments.

Code: G27

| d1 | l1 | d2 | d3 | K | l3 | |
|-----|-------------------|-------------------|----|---|----|-------------------|
| 14 | 17 | 20 | 25 | 6 | 6 | |
| | 22 | | | | | |
| | 27 | | | | | |
| | 36 | | | | | |
| | 46 | | | | | |
| 16 | 56 | 20 | 25 | 6 | 8 | |
| | l2 : > 2 - 3 x d1 | | | | | |
| | 17 | | | | | |
| | 22 | | | | | |
| | 27 | | | | | |
| | 36 | | | | | |
| | 46 | | | | | |
| 56 | | | | | | |
| 20 | 66 | 26 | 31 | 6 | 8 | |
| | 76 | | | | | l2 : > 2 - 3 x d1 |
| | 86 | | | | | |
| | 96 | | | | | |
| | 116 | | | | | |
| | 136 | | | | | l2 : > 2 - 3 x d1 |
| | 156 | | | | | |
| | 176 | | | | | |
| | 196 | | | | | |
| | 25 | | | | | 22 |
| 27 | | | | | | |
| 36 | | | | | | |
| 46 | | | | | | |
| 56 | | | | | | |
| 66 | | | | | | |
| 76 | | | | | | |
| 86 | | | | | | |
| 96 | | | | | | |
| 116 | | l2 : > 2 - 3 x d1 | | | | |
| 136 | | | | | | |

| d1 | l1 | d2 | d3 | K | l3 | |
|----|-------------------|----|----|----|----|--|
| 30 | 27 | 42 | 47 | 6 | 8 | |
| | 36 | | | | | |
| | 46 | | | | | |
| | 56 | | | | | |
| | 66 | | | | | |
| | 76 | | | | | |
| | 86 | | | | | |
| 40 | 96 | 54 | 60 | 10 | 12 | |
| | 116 | | | | | |
| | 136 | | | | | |
| | 156 | | | | | |
| | 176 | | | | | |
| | 196 | | | | | |
| | l2 : > 2 - 3 x d1 | | | | | |

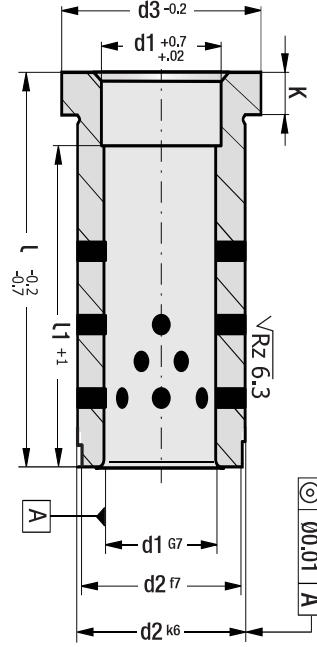
Sliding bushing systems provide higher stability. These products are lubricated once as a thin layer and this reduces negative effects.

Order: G27. d1 x l1



Guide Bush Headed, Self-Lubricating

Code: G25



G25 products used in injection moulds with G12D guide pillars (without oil groove). H7 tolerance is recommended in guide bush systems. It is compatible with the sudden movements during working. These products are not affected by vibration / impacts.

Heat resistance: 150° C. It Can Even Work in Humid Environments.

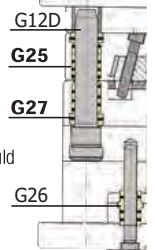
Code: G25

| d1 | l | d2 | d3 | K | |
|----|-----------------|----|----|---|--|
| 12 | 16 | 18 | 22 | 4 | |
| | 21 | | | | |
| | 27 | | | | |
| | 36 | | | | |
| | 46 | | | | |
| 16 | 56 | 22 | 27 | 6 | |
| | l1 : 2 - 3 x d1 | | | | |
| | 27 | | | | |
| | 36 | | | | |
| | 46 | | | | |
| 20 | 56 | 26 | 31 | 6 | |
| | l1 : 2 - 3 x d1 | | | | |
| | 27 | | | | |
| | 36 | | | | |
| | 46 | | | | |
| 25 | 56 | 30 | 35 | 6 | |
| | l1 : 2 - 3 x d1 | | | | |
| | 27 | | | | |
| | 36 | | | | |
| | 46 | | | | |

| d1 | l | d2 | d3 | K |
|-----|-----|----|----|----|
| 30 | 36 | 42 | 47 | 6 |
| | 46 | | | |
| | 56 | | | |
| | 66 | | | |
| | 76 | | | |
| 40 | 86 | 54 | 60 | 10 |
| | 96 | | | |
| | 116 | | | |
| | 136 | | | |
| | 156 | | | |
| 176 | | | | |



IMPORTANT!
Self-lub. bushes:
The friction surface should be lubricated once in order to activate permanent lubricating at the first use.



Order: G25. d1 x l

Material: Bronze + graphite inserts