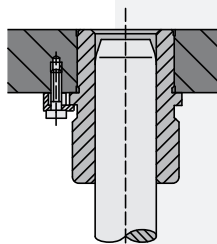


NEW

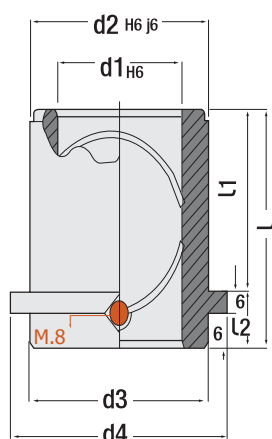


Guide Bush, Thick & Short Type

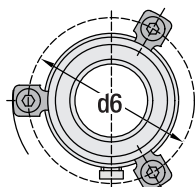
Code: **G34K**

(for heavy dies / with collar & lubricating)

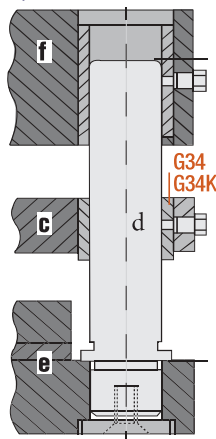
Thick type steel bushes: To provide perpendicularity at bush and guide pillar with new design of GTH Die Components on product suitable flange fixation (balanced layout) on bearing area is created. During mounting, shrink fit should not be done. To avoid clamping and surface disorders at products, by inserting soft tight products to the slots, mounting can be ensured with clamps.



Clamping Detail Code: **G100**



4 pcs. clamp for d1 = 38 mm and larger sizes.



Ø d1	L mm	Ø d2	Ø d3	Ø d4	L1 mm	L2 mm
19 20	35	32	32	40	23	12
24 25	35	40	40	48	23	12
32 30	42	48	48	56	30	12
38 40	52	58	58	66	37	15
48 50	65	70	70	80	47	18
60 63	80	85	85	95	60	20
80	80	105	105	118	60	20

Order: **G34K. d1 x L x L1**

Material: 1.7131 (16MnCr5)
Hardness: 58 - 62 HRC



IMPORTANT!

Pls. lubricate from grease nipple on bush occasionally.

Lithium Grease

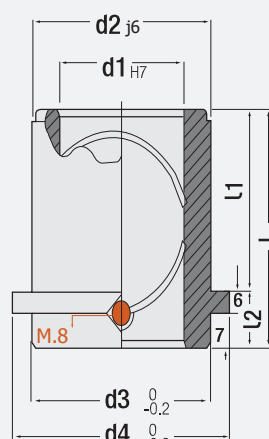
Order: 950200 (1 Lt.)

Guide Bush, Thin & Short Type

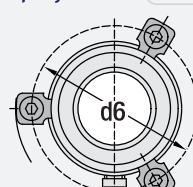
Code: **G34**

(with collar & lubricating)

For being GTH Die Components products having long life and maximum resistance against abrasion, unique precision has provided at surface roughness. This is also created specific bushing system.



Clamping Detail Code: **G100**



4 pcs. clamp for d1 = 38 mm and larger sizes.

Mounting Details:

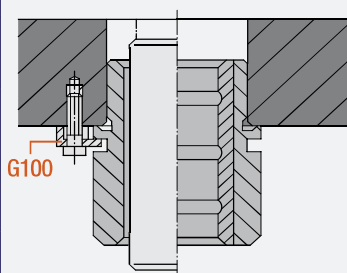
Code: **G34K**

Code: **G34**

Ø d1	d6
20	48.8
25	56.8
30	64.8
40	74.8
50	86.8
63	101.8
80	121.8

Ø d1	d6
16	44.8
20	44.8
25	50.8
30	55.8
40	66.8
50	76.8

Ø d1	L mm	Ø d2	Ø d3	Ø d4	L1 mm	L2 mm
16 NEW	36	28	28	34	23	13
20	36	28	28	34	23	13
25	36	34	34	39	23	13
30	50	39	39	44	37	13
40	50	50	50	54	37	13
50	60	60	60	64	47	13



Order: **G34. d1 x L x L1**

Material: 1.7131 (16MnCr5)
Hardness: 58 - 62 HRC

