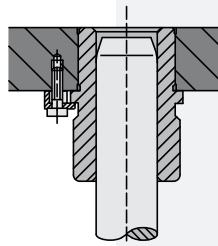


**NEW**

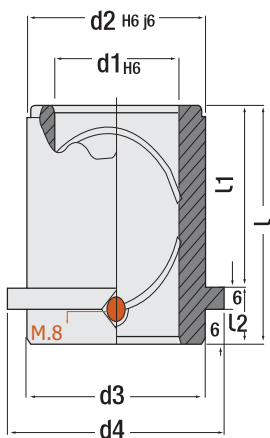


### Guide Bush, Thick & Short Type

Code: **G34K**

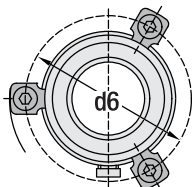
(for heavy dies / with collar & lubricating)

**Thick type steel bushes:** To provide perpendicularity at bush and guide pillar with new design of GTH Die Components on product suitable flange fixation (balanced layout) on bearing area is created. During mounting, shrink fit should not be done. To avoid clamping and surface disorders at products, by inserting soft tight products to the slots, mounting can be ensured with clamps.

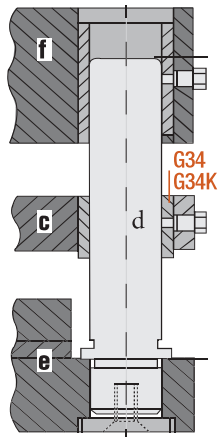


∅ d1	L mm	∅ d2	∅ d3	∅ d4	L1 mm	L2 mm
19 20	35	32	32	40	23	12
24 25	35	40	40	48	23	12
32 30	42	48	48	56	30	12
38 40	52	58	58	66	37	15
48 50	65	70	70	80	47	18
60 63	80	85	85	95	60	20
80	80	105	105	118	60	20

Clamping Detail Code: **G100**



4 pcs. clamp for d1 = 38 mm and larger sizes.



Order: **G34K. d1 x L x L1**

Material: 1.7131 (16MnCr5)  
Hardness: 58 - 62 HRC



**IMPORTANT!**  
Pls. lubricate from grease nipple on bush occasionally.

Lithium Grease

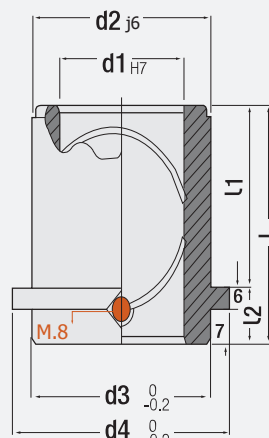
Order: 950200 (1 Lt.)

### Guide Bush, Thin & Short Type

Code: **G34**

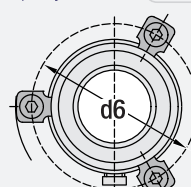
(with collar & lubricating)

For being GTH Die Components products having long life and maximum resistance against abrasion, unique precision has provided at surface roughness. This is also created specific bushing system.



∅ d1	L mm	∅ d2	∅ d3	∅ d4	L1 mm	L2 mm
<b>NEW</b> 16	36	28	28	34	23	13
20	36	28	28	34	23	13
25	36	34	34	39	23	13
30	50	39	39	44	37	13
40	50	50	50	54	37	13
50	60	60	60	64	47	13

Clamping Detail Code: **G100**



4 pcs. clamp for d1 = 38 mm and larger sizes.

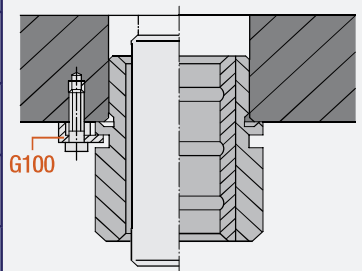
#### Mounting Details:

Code: **G34K**

Code: **G34**

∅ d1	d6
20	48.8
25	56.8
30	64.8
40	74.8
50	86.8
63	101.8
80	121.8

∅ d1	d6
16	44.8
20	44.8
25	50.8
30	55.8
40	66.8
50	76.8



Order: **G34. d1 x L x L1**

Material: 1.7131 (16MnCr5)  
Hardness: 58 - 62 HRC