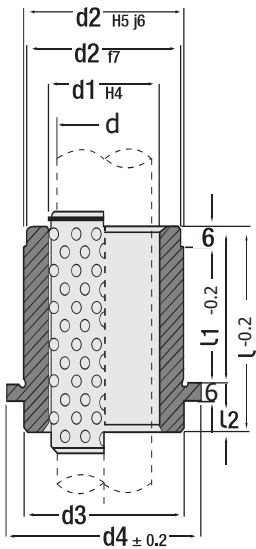




Guide Bush for Ball Cage (Short type)

Code: **G38**

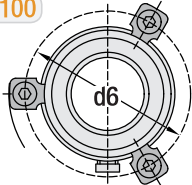
G38 guide bushes work without problem at dies, cuttings under 0.5 mm sheet metal thickness and where cutting space is low and when 200 stamp per minute are exceeded. It is not resistant to the lateral loads. They are preferred in cases that precision should be increased.



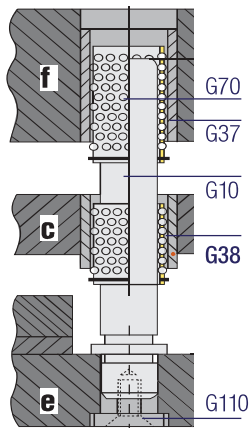
∅ d	l mm	∅ d1	∅ d2	∅ d3	∅ d4	∅ d6	l1 mm	l2 mm
15 16	35	21	30	30	34	46.8	23	12
		22						
19 20	35	25	32	32	40	48.8	23	12
		26						
24 25	35	30	40	40	48	56.8	23	12
		31						
32 30	42	40	48	48	55	64.8	30	12
		38						
38 40	52	46	58	58	65	74.8	37	15
		48						
48 50	65	56	70	70	80	86.8	47	18
		58						
60 63	80	68	85	85	95	101.8	60	20
		71						
80	80	92	105	105	118	121.8	60	20

Clamping Detail

Code: **G100**



4 pcs. clamp for d = 38 mm and larger sizes.



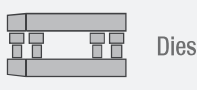
Note: Two different products in section (d) are to avoid reverse closing of dies during mounting by using three pcs. main dimensions and one pcs. auxiliary (d = ∅15 - 19 - 24 - 32 - 38 - 48 - 60 mm) dimensions at same die, is avoided reverse closing of die plate. Thus, symmetrical die closure is ensured.

Example: In the same die (∅20 x 3 - ∅19 x 1) = 4 pieces

Note: Should be ordered with G70.

Order: **G38. d x l x l1**

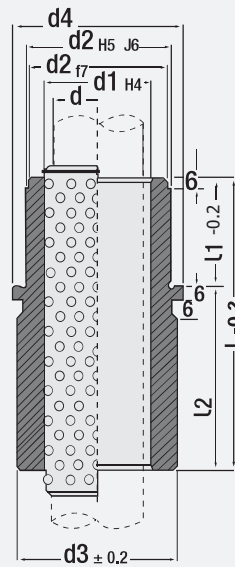
Material: 1.7131 (16MnCr5)
Hardness: 58 - 62 HRC



Guide Bush for Ball Cage (Long type)

Code: **G37**

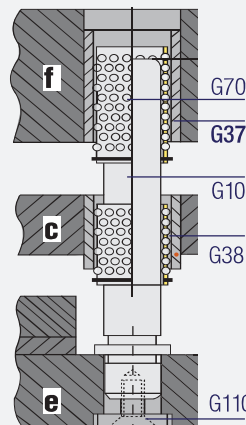
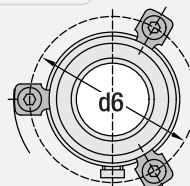
High precision guide bushes for ball cage: Despite providing high reliability at high speeds, contacting balls from one point, brings the system to precision status against impacts and side loads. This disadvantage is compensated to give product diameters up to a certain point in the upper tolerance, the working surface should be precise.



∅ d	l mm	∅ d1	∅ d2	∅ d3	∅ d4	∅ d6	l1 mm	l2 mm
15	43	21						20
16	59	30	32	34	46.8	23		36
	22							
19	43	25						20
20	59	32	39	40	48.8	23		36
	26							
24	59	30						36
25	79	40	46	48	56.8	23		56
	31							
32	75	40						45
30	93	48	53	55	64.8	30		63
	38							
38	82	46						45
40	108	58	63	65	74.8	37		71
	48							
48	97	56						50
50	127	70	77	80	86.8	47		80
	58							
60	116	68						56
63	150	85	92	95	101.8	60		90
	71							
80	120	92	105	115	118	121.8	60	60
	150							90

Clamping Detail

Code: **G100**



Note: Should be ordered with G70.

Order: **G37. d x l x l1**

Material: 1.7131 (16MnCr5)
Hardness: 58 - 62 HRC