

Code: **G107**

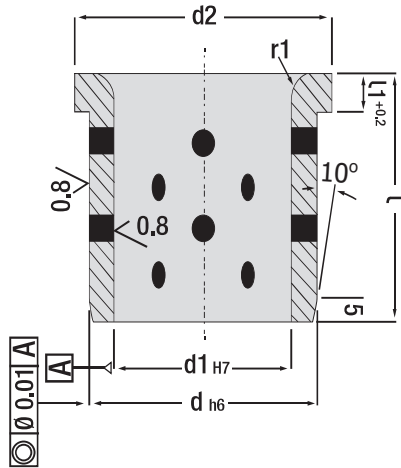
Code: **G42**

Guide Bush Headed, Self-Lubricating



Working
Direction

Heat Resistance:
< 150°C



d1	l	d	d2	l1	r1
20	35	28	36	8	2
25	40	32	40	8	4
30	55	40	50	8	6
32	55	40	50	8	6
40	70	50	60	8	6
42	70	50	60	8	6
50	75	63	75	12	8
52	75	63	75	12	8
63	80	80	90	12	8
80	100	100	110	12	8
100	125	125	135	12	8

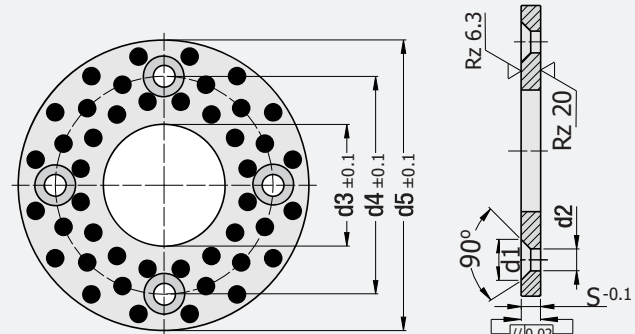
Thrust Washer - Perforated, Self-Lubricating

In-Die & Mould Slide Systems

Heat Resistance: < 150°C

* Spare part for in-die applications

* Spare part in core systems etc. in injection moulds



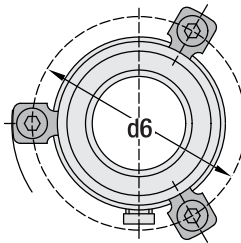
d3	d5	d4	S	d1	d2	Hole
12.2	40	28	3	6.9	3.0	2
16.2	50	28	3	6.9	3.0	2
20.2	50	35	5	11.5	5.5	2
25.2	55	40	5	11.5	5.5	2
30.2	60	45	5	11.5	5.5	2
35.2	70	50	5	11.5	5.5	2
40.2	80	60	7	13.8	6.6	2
45.3	90	67.5	7	13.8	6.6	2
50.3	100	75	8	13.8	6.6	4
60.3	120	90	8	18.3	9.0	4
70.3	130	100	10	18.3	9.0	4
80.3	150	120	10	18.3	9.0	4

Order: **G107**. d3 x d5

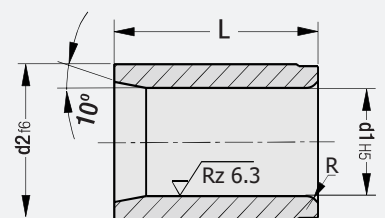
Material: Bronze + graphite inserts



Code: **G102**



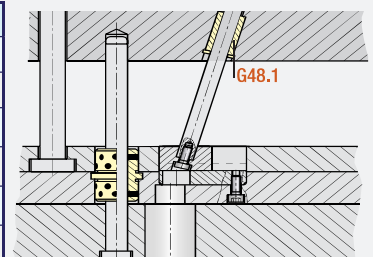
Code: **G101**



Bronze Bush - Plain

Code: **G48.1** x d1 x L

d1	l	d2	R
10	14	14	1.0
10	20	14	1.0
12	20	17	1.5
12	25	17	1.5
16	25	22	2.0
16	32	22	2.0



Order: **G42**. d1 x l

Material: Bronze + graphite inserts



Lithium
Grease

Self-lubricating components should be lubricated once in order to activate permanent lubricating at the first use.

Order: 950200 (1 Lt.)

