



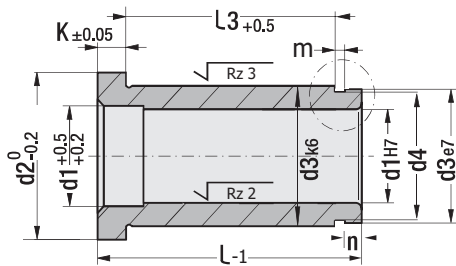
**Guide Bush - Headed**

Code: **G49**

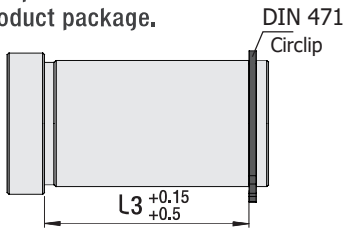
**Guide Bush - Headed**  
(with circlip slotted)

Code: **G49**

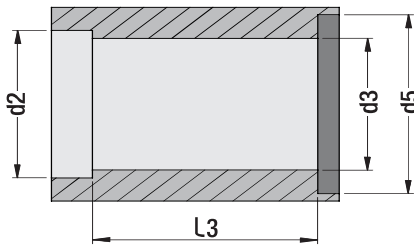
For general usage in injection mould guide systems - it prevents the bush protrude in free rotating plates (H6 centre fixing).



\* Circlip is included in product package.



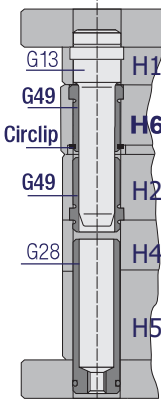
**Mounting Dimensions**



**Compatible Pillars**



**Mounting Example**



d1	L	d3	d2	k	L3	m	n	d4	d5	Circlip
12	27	18	25	6	18	1	2	17	26.7	DIN 471 Ø 18
	36				27					
	46				37					
	56				47					

14	27	20	25	6	18	1	2	19	29.1	DIN 471 Ø 20
	36				27					
	46				37					
	56				47					
15	66	20	25	6	57	1	2	19	29.1	DIN 471 Ø 20
	76				67					
	86				77					
	96				87					
16	27	22	27	6	18	1	2	21	31.7	DIN 471 Ø 22
	36				27					
	46				37					
	56				47					

18	27	26	31	6	18	1	2	25	36.3	DIN 471 Ø 26
	36				27					
	46				37					
	56				47					
20	66	26	31	6	57	1	2	25	36.3	DIN 471 Ø 26
	76				67					
	86				77					
	96				87					
24	27	30	35	6	17	2	2	29	41.4	DIN 471 Ø 30
	36				26					
	46				36					
	56				46					

22	27	30	35	6	17	2	2	29	41.4	DIN 471 Ø 30
	36				26					
	46				36					
	56				46					
24	66	30	35	6	56	2	2	29	41.4	DIN 471 Ø 30
	76				66					
	86				76					
	96				86					
24	76	30	35	6	66	2	2	29	41.4	DIN 471 Ø 30
	86				76					
	96				86					
	116				106					
24	136	30	35	6	126	2	2	29	41.4	DIN 471 Ø 30
	156				146					

30	27	42	47	6	15	2	4	40	56	DIN 471 Ø 42
	36				24					
	46				34					
	56				44					
32	66	42	47	6	54	2	4	40	56	DIN 471 Ø 42
	76				64					
	86				74					
	96				84					
40	116	42	47	6	104	2	4	40	56	DIN 471 Ø 42
	136				124					
	156				144					
	176				164					
42	196	42	47	6	184	2	4	40	56	DIN 471 Ø 42
	36				19					
	46				29					
	56				39					
44	66	54	60	10	49	2	5	51	69.3	DIN 471 Ø 54
	76				59					
	86				69					
	96				79					
46	116	54	60	10	99	2	5	51	69.3	DIN 471 Ø 54
	136				119					
	156				139					
	176				159					
48	196	54	60	10	179	2	5	51	69.3	DIN 471 Ø 54
	246				229					

50	76	66	72	10	58	3	5	62	82.7	DIN 471 Ø 65
	96				78					
	116				98					
	136				118					
50	156	66	72	10	138	3	5	62	82.7	DIN 471 Ø 65
	196				178					

50	96	80	86	20	68	3	5	77	99.1	DIN 471 Ø 80
	116				88					
	136				108					
	156				128					
60	196	80	86	20	168	3	5	77	99.1	DIN 471 Ø 80
	246				218					

60	96	80	86	20	68	3	5	77	99.1	DIN 471 Ø 80
	116				88					
	136				108					
	156				128					
60	196	80	86	20	168	3	5	77	99.1	DIN 471 Ø 80
	246				218					

60	96	80	86	20	68	3	5	77	99.1	DIN 471 Ø 80
	116				88					
	136				108					
	156				128					
60	196	80	86	20	168	3	5	77	99.1	DIN 471 Ø 80
	246				218					

60	96	80	86	20	68	3	5	77	99.1	DIN 471 Ø 80
	116				88					
	136				108					
	156				128					
60	196	80	86	20	168	3	5	77	99.1	DIN 471 Ø 80
	246				218					

