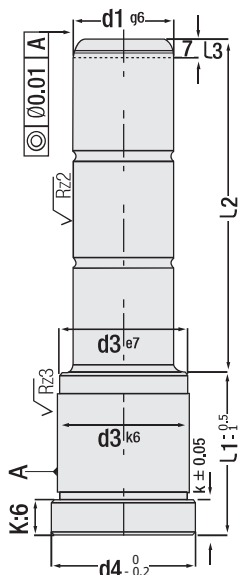


**NEW**



Code: **G50**

**Guide Pillar - Shouldered**



Code: **G50D**

(without oil groove)  
"As per request"

Code: **G50**  
(with oil groove)



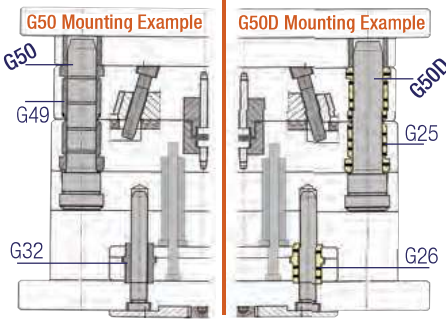
G49



G25

The tolerances and working space of our products are determined according to DIN 7161.

**IMPORTANT! Injection Mould:** Our guide pillars & bushes cover standard mould systems. But, guide pillar & bushes with different tolerances should be selected for aluminum injection moulds (high temperature / pressure). It should be requested from our company (production with special materials).



d1	L1	L2	d3	d4
14	17	35	20	25
		55		
		75		
		95		
14	22	20	20	25
		35		
		40		
		45		
		50		
		55		
		65		
		70		
14	27	20	20	25
		35		
		40		
		45		
		55		
		65		
		85		
14	36	20	20	25
		35		
		40		
		45		
		55		
		65		
		75		
		95		
14	46	20	20	25
		35		
		45		
		65		
		105		
14	56	20	20	25
		35		
		55		
		75		
14	66	55	20	25
		65		
		95		
14	76	55	20	25
		95		
14	86	55	20	25
		95		
14	96	55	20	25
		95		
14	116	75	20	25

d1	L1	L2	d3	d4
15	17	35	20	25
		55		
		75		
		95		
15	22	20	20	25
		35		
		40		
		45		
		50		
		55		
		65		
		70		
15	27	20	20	25
		35		
		40		
		45		
		55		
		65		
		85		
15	36	20	20	25
		35		
		40		
		45		
		55		
15	46	20	20	25
		35		
		45		
		65		
15	56	20	20	25
		35		
		55		
		75		
15	66	55	20	25
		65		
		95		
15	76	55	20	25
		95		
15	86	55	20	25
		95		
15	96	55	20	25
		95		
15	116	75	20	25

d1	L1	L2	d3	d4
18	17	35	26	31
		55		
		75		
		95		
18	22	20	26	31
		35		
		40		
		45		
		50		
		55		
		60		
		65		
		70		
		80		
		85		
115				
18	27	20	26	31
		35		
		40		
		45		
		50		
		55		
		60		
		65		
18	36	20	26	31
		35		
		40		
		45		
		55		
18	46	20	26	31
		35		
		45		
		65		
18	56	20	26	31
		35		
		45		
		75		
		80		
18	66	55	26	31
		65		
		95		
18	76	55	26	31
		95		
18	86	55	26	31
		95		
18	96	55	26	31
		95		
18	116	75	26	31

To be continued on the next page

GTH guide pillars are polished with surface polishing machine at final stage of production (after grinding).

Order: **G50. d1 x L1 x L2**  
(G50D = without oil groove)

Material: 1.1213 (Cf53)  
Hardness: 58 - 62 HRC