

Flange Cast Bush - Rectangular Steel Type

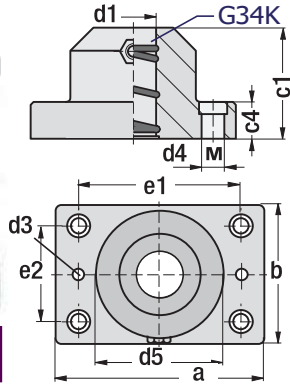
Code: **G80.1**



G20 + G79 + G80.1
Set as per request



Order: **G80.1 x d1**



Steel Type

Code: **G80.1**

Upper and lower parts of flange cast bushes have been machined **G34K Guide Bush** and grease fitting have been added.

d1	a mm	b mm	c1	c4	d3 Pin	d4 M	∅ d5	e1	e2
40	130	80	77	30	∅10	13 M12	70	95	45
50	160	96	95	35	∅10	15 M14	83	118	55
63	180	110	120	35	∅12	17 M16	94	132	62
80	215	130	120	40	∅14	21 M20	112	160	75

Flange Cast Bush - Rectangular Bronze Type

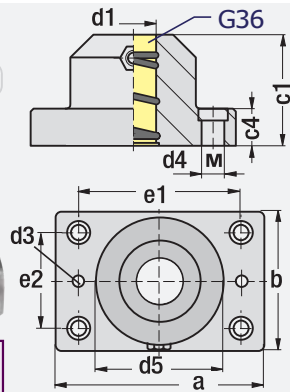
Code: **G80.2**



G20 + G79 + G80.2
Set as per request



Order: **G80.2 x d1**



Bronze Type

Code: **G80.2**

Upper and lower parts of flange cast bushes have been machined **G36 Guide Bush** and grease fitting have been added.

d1	a mm	b mm	c1	c4	d3 Pin	d4 M	∅ d5	e1	e2
40	130	80	77	30	∅10	13 M12	70	95	45
50	160	96	95	35	∅10	15 M14	83	118	55
63	180	110	120	35	∅12	17 M16	94	132	62
80	215	130	120	40	∅14	21 M20	112	160	75

Flange Cast Bush - Rectangular Cast Type

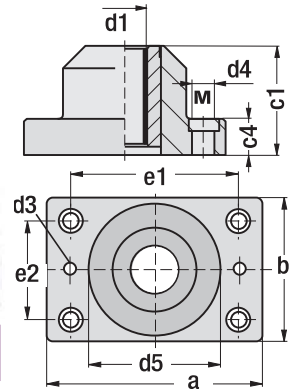
Code: **G80.3**



G20 + G79 + G80.3
Set as per request



Order: **G80.3 x d1**



Cast Type

Code: **G80.3**

Upper and lower parts of Flange cast bushes have been machined inner hole has been machined as cast bush bearing.

d1 R6	a mm	b mm	c1	c4	d3 Pin	d4 M	∅ d5	e1	e2
40	130	80	77	30	∅10	13 M12	70	95	45
50	160	96	95	35	∅10	15 M14	83	118	55
63	180	110	120	35	∅12	17 M16	94	132	62
80	215	130	120	40	∅14	21 M20	112	160	75

Flange Cast Bush - Rectangular Ball Cage Type

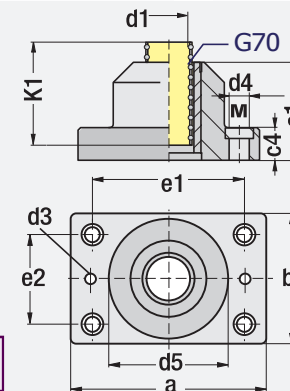
Code: **G80.4**



G20 + G79 + G80.4
Set as per request



Order: **G80.4 x d1**



Ball Cage Type

Code: **G80.4**

Upper and lower parts of flange cast bushes have been machined **G38 Guide Bush** and **G70 Ball Cage Bush** have been added.

d1	a mm	b mm	c1	c4	d3 Pin	d4 M	∅ d5	e1	e2	K1
40	130	80	77	30	∅10	13 M12	70	95	45	80
50	160	96	95	35	∅10	15 M14	83	118	55	105
63	180	110	120	35	∅12	17 M16	94	132	62	140
80	215	130	120	40	∅14	21 M20	112	160	75	140

Flange Cast Bush - Rectangular Self-Lubricating Type

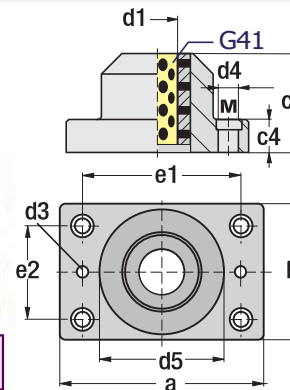
Code: **G80.5**



G20 + G79 + G80.5
Set as per request



Order: **G80.5 x d1**



Self-Lubricating Type

Code: **G80.5**

Upper and lower parts of flange cast bushes have been machined **G41 Self-Lub. Guide Bush** have been added.

d1	a mm	b mm	c1	c4	d3 Pin	d4 M	∅ d5	e1	e2
40	130	80	77	30	∅10	13 M12	70	95	45
50	160	96	95	35	∅10	15 M14	83	118	55
63	180	110	120	35	∅12	17 M16	94	132	62
80	215	130	120	40	∅14	21 M20	112	160	75