



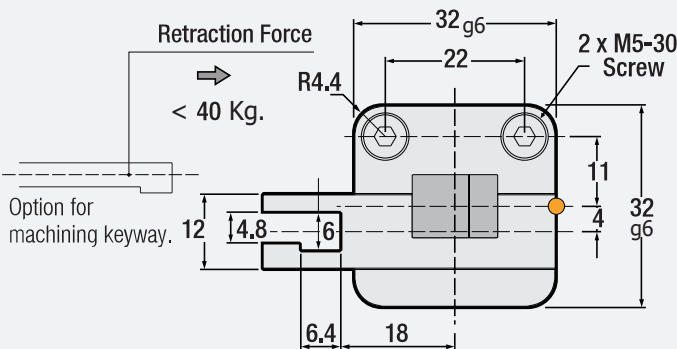
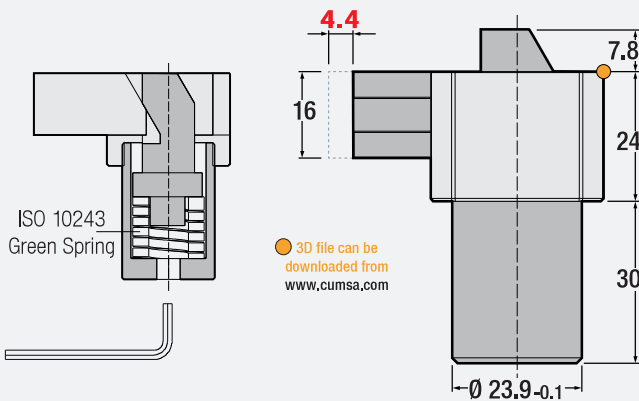
Core Cam

Code: **UC**

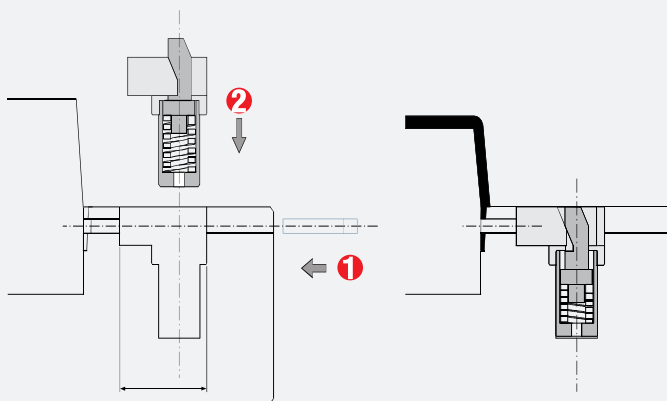
Mechanism to make lateral holes, automatic retention for the core insert. Requires very small area for installation. Reduces costs in machining and fitting. Reduces mould production time. Machining for installation is easier due to always being at 90° to parting line. Offers a standard solution to the mould makers.

Material: 1.2344
Hardness: 52 - 54 HRC
Max. working temperature: 150°.

Attention! Standard stroke of 4.4mm.



Order: **UC.325445**



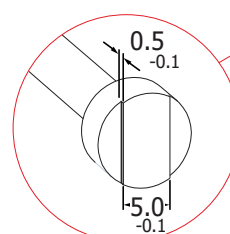
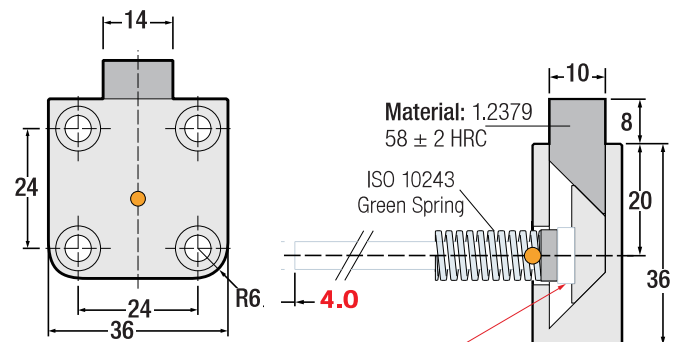
Compact Coring Unit

Code: **UA**

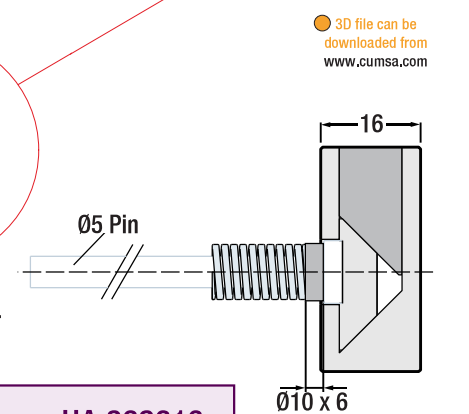
This unit uses the open and close movement of the mould to make lateral holes in wall sections of plastic parts. Easy to assemble and remove from the mould. Reduces costs in machining and fitting. Reduces mould production time. Machining for installation is easier due to always being at 90° to parting line. Offers a standard solution to the mould makers. Requires very small area for installation.

Material: 1.2344
Hardness: 52 - 54 HRC
Max. working temperature: 150°.

Attention! Standard stroke of 4.0mm.



Option for machining keyway.



Order: **UA.363616**

